

# PUBLIC AUCTION

## NIAGARA FORGED PRODUCTS INC.

Forging Hammers, Furnaces, CNC Machining & Turning & Plant Support

1668 Allanport Road, Port Robinson, Ontario



JOHNFORD DMC-1600H HI-NET MACHINING CENTER



ECLIPSE COMBUSTION CAR BOTTOM FURNACE



DAINICHI M152X400 CNC LATHE



CLEARING F-2600-96 PRESS

**Auction: Tuesday Sept 27, 10:30 AM (ET)**

**Inspection: Monday Sept 26, 9 AM to 4 PM**

**Bid Live Onsite  
& Online Via**

**BidSpotter.com**



**INFINITY**  
Asset Solutions  
infinityassets.com 905.669.8893

AUCTIONS • LIQUIDATIONS • FINANCING • APPRAISALS



**Hilco** Industrial

www.hilcoind.com

# CNC MACHINING & TURNING CENTERS



**2004**

**15,000 RPM**

**JOHNFORD DMC-1600H HI-NET MACHINING CENTER**



**62.9" x 157.5"**

**DAINICHI M152X400 CNC LATHE**



**20" x 80"**

**9,000 RPM**

**MAZAK VTC-20C CNC VERTICAL MACHINING CENTER**



**5 Axis**

**CAT 50**

**DECKEL MAHO MH1600C CNC MACHINING CENTER**



**5,000 RPM**

**KEARNEY & TRECKER MACHINING CENTER**



**4,500 RPM**

**CAT 50**

**LEBLOND MAKINO FNC128 MACHINING CENTER**



**8 Pallet**

**CINCINNATI MILACRON T-10 MACHINING CENTER**



**2 Available**

**OKUMA LB25 CNC LATHE**

2004 Johnford DMC-1600H Hi-Net Machining Center, Fanuc Series 18i-MB CNC Control, 40 ATC, HSK100 Tooling, Blum Measure, Renishaw Probe, 43" x 64" Table, Travels: X-60", Y-51", Z-34", Coolant Through Spindle, 15,000 RPM, s/n VFA4019

Mazak VTC-20C CNC Vertical Machining Center, Mazatrol M Plus Control, Vertical Travelling Column, Dual 24 ATC, 40 Taper, 20" x 80" Table, Travels: X-65", Y-20", Z-20", 9,000 RPM, Chip Conveyor, 3/60/460V, s/n 129862

Kearney & Trecker Milwaukee-Matic Orion 2300 (3) Pallet CNC Horizontal Machining Center, 32" x 32" Rotary Pallets, 5,000lb Max Pallet Cap., 5,000 RPM Spindle, 40 ATC, 4" Spindle, Travels: X-48", Y-52", Z-48", Fixed Spindle, PDB CAT 50, Chip Conveyor

Leblond Makino FNC128 CNC Vertical Machining Center, Fanuc OM Control, 50 Taper, 32" x 70" Table, Travels: X-32", Y-60", Z-9", 4,500 RPM, 30 ATC, Chip Conveyor

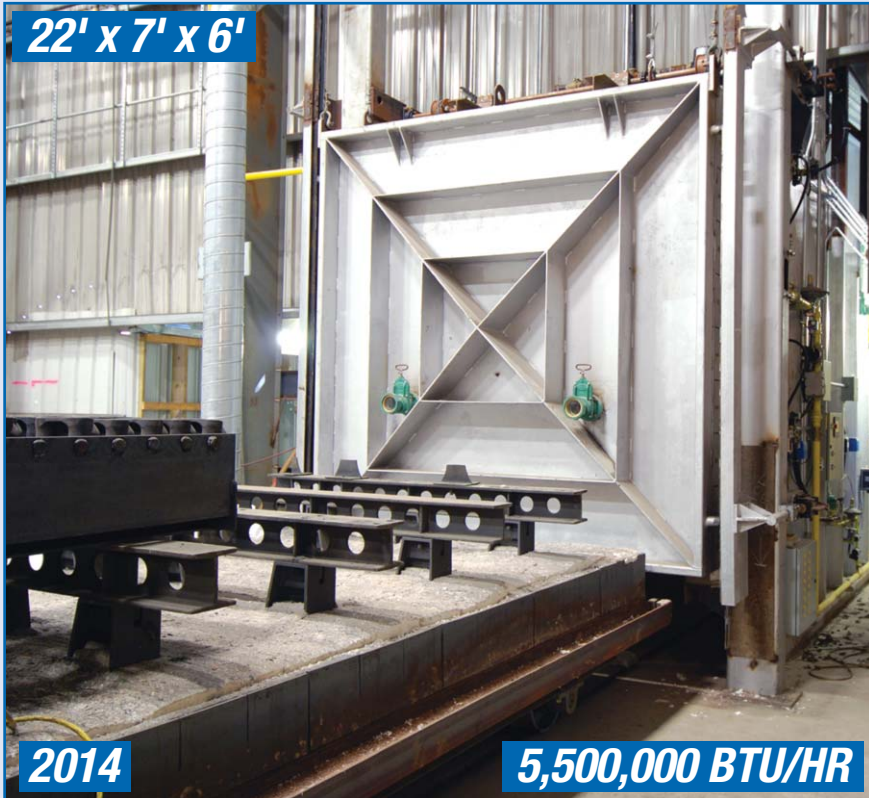
Cincinnati Milacron model T-10 (8) Pallet CNC Horizontal Machining Center, 20" x 20", Travels: X-32", Y-26", Z-26", 2,000lb Max Pallet Cap., 40 Taper, Power Drawbar, 130 ATC, s/n 3621BD187-0027

Deckel Maho MH1600C 5-Axis CNC Machining Center, Cat 50, Approx. 47" x 38" Table, Deckel Maho model Mill Plus CNC Controller, Grundig Mill Plus Control, 60 ATC, Chip Blaster, Chip Conveyor, 52 kVA, 125 Amp, 3/60/400V, s/n 160200

Dainichi M152x400 CNC Lathe, s/n 24987, Fanuc 15-T Control, 2-Axis CNC, 54" 4 Jaw Chuck, 62.9" Swing, 157.5" Between Centers, 216" Bed, 4" Bore, Power Tailstock, Steady & Follow Rests, Chip Conveyor, 75HP, 250 RPM Max

(2) Okuma LB25 CNC Lathes OSP5020L Control, 10"/12" 3 Jaw Chuck, 12 Station Turret, 26" Between Centers, 2.9" Bore, Tailstock, Chip Conveyor, s/n's 9289, 9144

# LATE MODEL FURNACES



22' x 7' x 6'

2014

5,500,000 BTU/HR

ECLIPSE COMBUSTION CAR BOTTOM FURNACE



7' x 22' CAR BOTTOM



12,000 GAL

7' x 22' x 12'

ENCIRC STAINLESS STEEL QUENCH TANK



9,000,000 BTU/HR

THE FURNACE WORKS PUSHER FURNACE



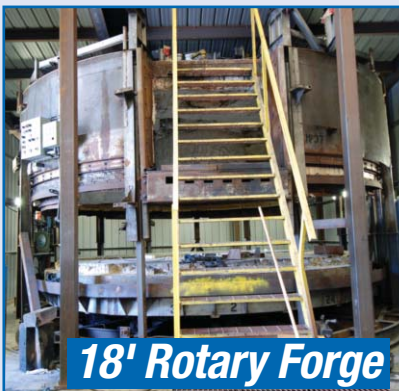
5,000,000 BTU/HR

ONSPEC SLOT FORGE FURNACE



4,000,000 BTU/HR

SG SHOT FORGE FURNACE



18' Rotary Forge

*This brochure is meant merely as a guide. Infinity Asset Solutions and Hilco Industrial make no guarantee, expressed or implied, as to the accuracy of the information in this brochure. Buyers should inspect the goods beforehand to satisfy themselves.*

Please Visit Website For Complete Specs & Additional Photos

2014 Eclipse Combustion Car Bottom Furnace, model 7' x 22' Car Furnace No 1, Approx. 6'H, 5,500,000 BTU/HR Max, Natural Gas, 1,950 Deg F Max Temp, s/n PMGTRM003

Encirc 12,000gal Stainless Steel Quench Tank, Approx. 7'W x 22'L x 12'H

SG model 88725 Shot Forge Furnace, s/n 8642J-A, 2' x 9' x 4' Cap., 4,000,000 BTU/HR Max, (4) Burner, Natural Gas, Honeywell Controls

The Furnace Works model Push Furnace 1 Pusher Furnace, (2) Zone, (9) Burner, 9,000,000 BTU/HR Max, Dual Side Push, 6' x 6" Opening x 17', Natural Gas, Honeywell Controls

Onspec model G849854 Slot Forge Furnace, 5,000,000 BTU/HR, Lead & Northrup Paper Graph Printer, Push Button Controls, 100" x 84" x 104" Interior Dimensions

18' Rotary Forge Furnace

# FORGING HAMMERS & PRESSES



**600 Ton**

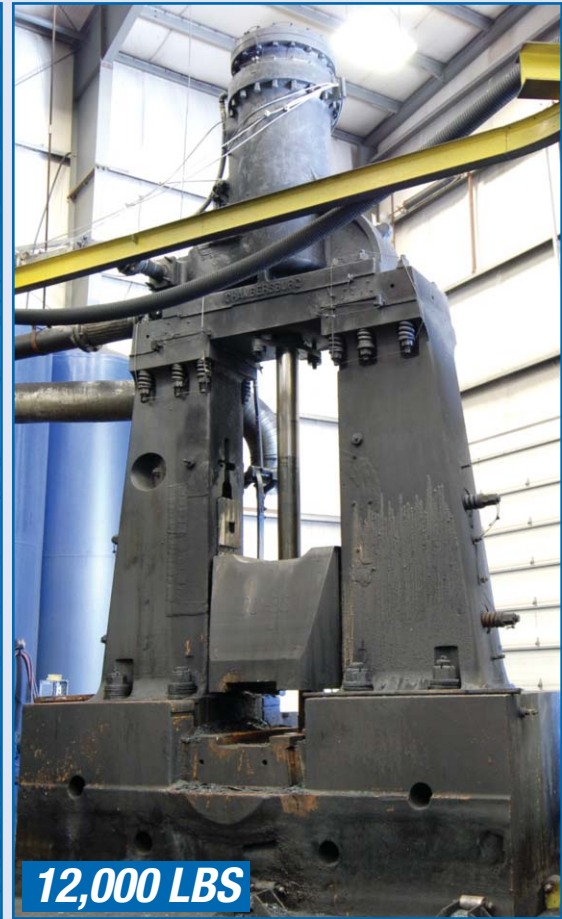
CLEARING F-2600-96 PRESS



**45,000 LBS**

**1 of 4 in N. America**

EUMOCO COUNTER BLOW FORGING HAMMER



**12,000 LBS**

CHAMBERSBERG 120-35 FORGING HAMMER



**1,500 LBS**

CHAMBERSBERG DOUBLE ACTION HAMMER PRESS



BLOW PRESS



**500 Ton**

CHAMBERSBERG TRIM PRESS



**Press Bases**



**New Press Bed Springs**

**Clearing** F-2600-96 600 Ton Straight Side Punch Press, 18" Stroke, 46" Shut Height, 10" Adjust, 90" x 60" Bolster, 10 Strokes/min, 32" x 38" Window, Light Curtains, Jobber Plus Control Metal Tech Corp., 3/60/460V, s/n 51-17153P

**Eumoco** 45,000lb (2,200 Ton) Counter Blow Forging Hammer

**Chambersberg** model 500 DGT 500 Ton Double Geared Trim Press, 15" Stroke, 10" Adjust, 42" x 42" Bed, 95,000lb Total Weight, Floor Mounted, 40 Amp, 3/60/460V, s/n 2895-L

**Chambersberg** model 120-35 12,000lb Forging Hammer, Approx. 40" x 52" Bed

**Chambersberg** model 150HE 1,500lb Mechanical Double Action Hammer Press, s/n 09197/1201L1

**Blow** Press, 36" x 30" Bed, 24" x 36" Ram

Lot of New Press Bed Springs

Bid Live ONSITE or ONLINE at

**BidSpotter.com**



VDF WOHLBERG B-800-P DEEP HOLE BORING LATHE



FAT TUR 560 ENGINE LATHE



AMERICAN STYLE H ENGINE LATHE



CRAVEN ENGINE LATHE



SETCO 53045 SPINDLE MILL



HYD-MECH VERTICAL BANDSAW



DOALL HC35A FULLY AUTOMATIC BANDSAW



KASTO HBA-520U HORIZONTAL BANDSAW



OHLER KA800HM COLD CIRCULAR SAW

## LATHES & MILLS

**VDF Wohlenberg B-800-P** Deep Hole Boring Lathe, 15' Bed, 36" x 42" Table, 12" Chuck, 4.5" Bore, s/n 4019

**FAT TUR 560** Engine Lathe, s/n 48409, Mitutoyo 2-Axis DRO, 16" 3 Jaw Chuck, 22" Swing, 141" Bed, 3.5" Bore, Tailstock, Tool Post

**American Style H** Engine Lathe, 32" Swing, 216" Bed, 12" Collet Style Chuck, 3" Bore, Steady Rests, 600 RPM Max

**Craven** Engine Lathe, 24" 4 Jaw Chuck, 50" Swing, 13' Between Centers, 2" Bore, Tailstock

**Setco 53045** Spindle Mill, s/n R10597, Selca 530X5D Control, 40" x 120" Bed, 78" Ram Travel, 84" Vertical Travel, 120" Bed Travel, 50 Taper, Extra Spindle, 50HP Head, 50,000lb Table Cap. w/ Spare T Slot Bed, Approx. 42" x 24"

**Bridgeport Series 2 STD** Milling Machine, s/n 6979, Accurite 3-Axis DRO, 11" x 58" Table, 50—3,500 RPM, Coolant, Power Feed

## SAWS

2001 **Hyd-Mech V-18** Series II Vertical Bandsaw, 18" Throat, Capacities: 90 Deg Rectangle: 18" x 20", Round 17.5", 45 Deg Rectangle: 18" x 13", Round 13", 45 Deg Mitre, 7.5HP, Max Workload 8,000lb, s/n J0801950

**DoAll HC35A** Fully Automatic Horizontal Bandsaw, 1" Blade, 18" Round Cap., Clamping, s/n VS5-70150

**Kasto HBA-520U** Horizontal Bandsaw, Auto Feed & Clamping, 2" Blade, 18" Bar Cap., Sutron Electronic Minipos 807 DRO Controller, 3/60/575V, 10 KW, 25 Amp, Chip Conveyor, Roll-in Table, s/n 6018-106-268

**Ohler KA800HM** Cold Circular Saw, 28" Blade, 14" Power Infeed, HD Conveyor, Hydraulic Chip Conveyor, Pendant Conveyor, s/n 8515

**Buffalo** model 12 Billet Shear

**Armstrong** Vertical Bandsaw



**Extra Tongs**

**GLAMA ELECTRIC POWERED FORGING MANIPULATOR, 5' ROTATING TONGS, SIDE SHIFT, 3 WHEEL, 1,695HRS W/ SPARE TONGS**



**25,000 Lbs**

**1 Of 4 Forklifts**

**HOIST FKE12.5 TYPE L ELECTRIC FORKLIFT, 25,000LB CAP., 2 STAGE, 95" MAX LIFT, FORK POSITIONERS, 65" FORKS, SIDE SHIFT, CUSHION TIRES, S/N 21463**



**106" x 81" Table**

**FERRANTI INTERNATIONAL METROLOGY SYSTEMS MERLINE XM CMM**



**OVERHEAD SONIC WELDING SYSTEM**

**WELDERS**

- Nelson** Nelweld 6000 Stud Welder, s/n 10017218
- Lincoln** DC-1500 Welder
- Canox** Welder
- Hobart** Welder w/ Wire Feeder
- 36" Weld Positioner**



**KODIAK METAL DETECTOR**

**TEST & MEASUREMENT**

- Ferranti** International Metrology Systems Merline XM CMM, 106" x 81" Table, Travels: X-71", Y-99", Z-40", s/n 3388
- Mitutoyo** Bright Brm507 CMM, 34" x 46" Table, s/n BA000122, Renishaw MIP Probe
- Faro** G0802 Portable CMM, s/n G08020102550 w/ Spare Tripod
- Kodiak** H-800R Generic NDT Non Destructive Test Benc, Approx. 4'
- Steel City** KDR Testing Machine, s/n 9502
- Kodiak** 1312 Flow Through Metal Detector, 12" x 12", s/n 131709
- Overhead Sonic Welding System w/ Approx. 4' x 33' Sub Arc Under Water Tank



**FARO PORTABLE CMM**



**NELSON STUD WELDER**



**34" x 46" Table**

**MITUTOYO BRIGHT BRM507 CMM**



**KONE FREE STANDING OVERHEAD CRANEWAY SYSTEM**

## CRANES & CONSTRUCTION EQUIPMENT

2014 **Kone** Free Standing Overhead Craneway System, 5 Ton Cap., (2) 40' Span Single Girder Cranes, 60' Runway

**Kone** Single Girder Bridge Crane, 5 Ton Cap., Approx. 40' Bridge x 200' Runway w/ 15' Spreader Bar

**Kone** UP14-2065-01 Bridge Crane, 5,000kg Cap., Approx. 45' Bridge, s/n 004889503

Overhead Bridge Crane, 6 Ton Cap., Approx. 40' Bridge x 100' Runway, Top Running, Underhung Hoist

**Hy-Dynamic** 250-C Rough Terrain Boom Crane, 25,000lb. Cap. Approx. 20' Boom

**Lorrain** Moto-Crane Portable Truck Crane

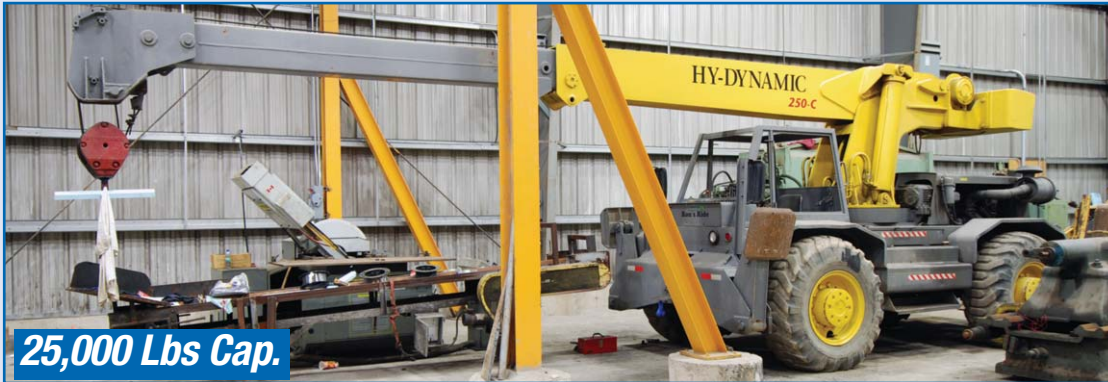
**John Deere** 310D Backhoe, 4 x 4, Turbo Engine, s/n 1031DG6546

2001 **Ditch Witch** HT 25 Trencher, A225 Bucket Attachment, s/n 1V0693

**Komatsu** D375E-1 Crawler Dozer, 6 Way Blade, s/n 1007

**Wacker** BS50-4S Gas Powered Tamper  
1 Ton Free Standing Jib Crane

**Gorbel** Wall Mounted Jib Crane, 500lb Cap., 15' Span



**HY-DYNAMIC 250-C ROUGH TERRAIN BOOM CRANE**

## COMPRESSORS

(2) **Ingersoll Rand** Siemens Centac 1,250HP Air Compressors, s/n's 1-5115-67998-01-1, 1-5115-67998-01-2

**Quincy** QSI-1000 300HP Air Compressor, s/n 93285J

**Gardner Denver** EAYQVC 500HP Air Compressor, 3/60/460V, s/n M32676

**Sullair** 500HP Air Compressor, s/n LBD10340-2

**Sullair** ES-8 Air Compressor

**Champion** 25HP Air Compressor

**Swan** Twin Head Air Compressor

**Western** Air Compressor

**Trinity Industries** Air Compressor Holding Tank, 109" Dia x 65' L, 30,000gal, 250 PSI @ 125 Deg F, .6733ga Shell Thickness, .436ga Head Thickness, s/n 39317



**LORRAIN MOTO-CRANE PORTABLE TRUCK CRANE**



**KOMATSU D375E-1 CRAWLER DOZER**



**FREE STANDING JIB CRANE**



**WACKER BS50-4S TAMPER**



**JOHN DEERE 310D BACKHOE**



**DITCH WITCH HT 25 TRENCHER**



**1,250 HP**  
**INGERSOLL RAND SIEMENS COMPRESSOR**



**500 HP**  
**GARDNER DENVER AIR COMPRESSOR**



**SULLAIR AIR COMPRESSOR**



**CHAMPION AIR COMPRESSOR**



70" W x 54" Dia.

ADS BARREL TYPE WHEELABRATOR



43" W x 38" Dia.

PANGBORN GN1217-17 ROTOBLAST BARREL TUMBLER



GOFF SANDBLASTER

## SUPPORT EQUIP.

**ADS** Wheelabrator Unit #ADS0020 Barrel Type, 70"W x 54"Dia, w/ 64" x 86" Loading Hopper, Push Button Controls

**Pangborn** GN1217-17 Rotoblast Barrel Tumbler, 43"W x 38"Dia, s/n 126NIM-617

**GOFF** Table Type Sandblasting Cabinet, 4' x 4' x 6'

**Empire** Super 650 6P Sandblaster  
2004 **Haimer** PC2000 Power Clamp Tooling Setup Machine, s/n 7007201

2013 **SIC** P62 Steel Marking Gun w/ Controller & Cart, s/n 71565

**Dynablast** H520BEN3C High Pressure Cleaning System, s/n 20091216

**Gardner** 3CB Dual Pedestal Grinder  
**Norton** Surface Grinder

10'W x 90'L Truck Scale, Touch Screen DRO

**Plus:** Huge Amount of Scrap Steel, Approx. 300,000lbs of Round Bar Stock, Presses & Press Components, Die Racking, Steel Bins, Shipping Containers, Dump Hoppers, Fanuc Robots, Dust Collectors, Hydraulic Power Packs, Metal Workbenches, Pumps, Pallet Jacks, Machine Vices, CNC Tooling & Tool Carts, Metal Cabinets, Transformers, Warehouse Fans, Measuring Equipment, Cutoff Saws, Parts Washers, T Slot Tables, Office Furniture, and Much More!



2004

HAIMER TOOL CLAMPER



2013

SIC STEEL MARKING GUN



Large Quantity Of Raw Steel, Bar Stock, Die Blocks, Work In Progress

*This brochure is meant merely as a guide. Infinity Asset Solutions & Hilco Industrial make no guarantee, expressed or implied, as to the accuracy of the information in this brochure. Buyers should inspect the goods beforehand to satisfy themselves.*

## TERMS OF SALE



**Payment:** All payments must be in Cash, Certified Funds, Wire Transfers, or Company Checks, which must be accompanied with a bank letter guaranteeing irrevocable payment to Infinity Asset Solutions Inc. Invoices up to \$2,000 can be paid by Visa, Mastercard or Interac.

All Online bidders must register on Bidspotter by Monday September 26, 5pm.

A 16% buyers premium will be added to all onsite purchases (18% Online).

A \$500 refundable security deposit is required upon onsite registration (\$2,000 Online).

A 25% deposit is required at time of purchase, balance due by 4pm Wednesday September 27, 2016. NO EXCEPTIONS.

All goods are sold "As Is, Where Is", ALL SALES ARE FINAL. All subject to prior sale. Complete terms and conditions including removal procedures, are available on our website, will be posted at the auction and will be provided at the time of registration.

## REMOVAL TIMES

All By Tuesday October 18. **Hours:** Monday – Friday between 8 am – 4 pm. No items may be removed during auction. NO EXCEPTIONS.

**DIRECTIONS:** To 1668 Allanport Road, Port Robinson, Ontario From Toronto Pearson Intl Airport to 1668 Allanport Rd, Port Robinson, ON. Exit Airport and follow signs for ON-427 S. Take QEW, ON-403 W and QEW to ON-406 S. Take the ON-58 exit toward Thorold/Niagara Falls. Turn right onto Davis Rd/ON-58 S. Continue onto Allanport Rd. Destination will be on the left.

Member In Good Standing Of:



INDUSTRIAL AUCTIONEERS ASSOCIATION



**INFINITY**  
Asset Solutions  
infinityassets.com 905.669.8893

AUCTIONS • LIQUIDATIONS • FINANCING • APPRAISALS



**Hilco** Industrial

www.hilcoind.com